



THIS
IS A
babyLance™
BABY

Infant Heelstick Incision Profile Comparison Guide

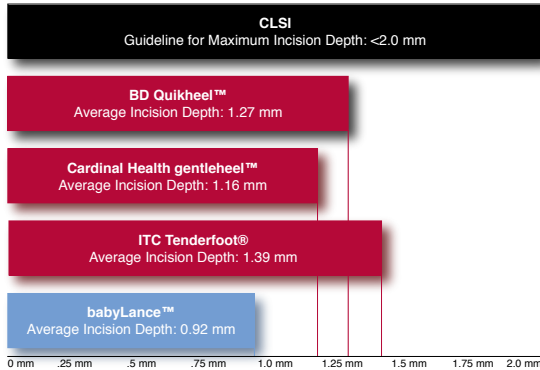
Designed for neonatal nurses...with neonatal nurses!

babyLance™ safety heelsticks have earned worldwide popularity for their **smooth and accurate incisions**, **ease of use** and **safety**.



Statistical Comparisons

Visual Comparisons



Although there is no industry standard that defines an ideal heelstick incisions depth, **Clinical Laboratory Standards Institute (CLSI) guidelines¹** do recommend that an incision for newborns should not exceed two millimeters deep.

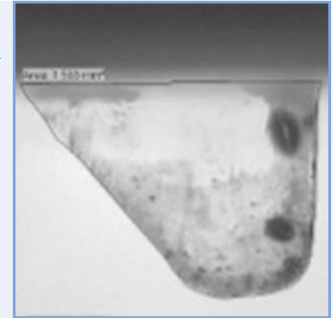
babyLance’s appropriate depths and ultra-smooth, accurate incisions **consistently produce preferred blood flow volumes** and **reduce the need for multiple heelstick procedures.**

¹ CLSI LA4-A5. Blood Collection on Filter Paper for Newborn Screening Programs; Approved Standard—Fifth Edition, Vol. 23, No. 21, 2007

babyLance™	Product Code	Depth (mm)	Body/Trigger Colors
Micropreemie	BLM	.60	Yellow/Lime
Preemie	BLP	.85	Pink/White
Newborn	BLN	1.0	Blue/Green
Toddler	BLT	1.4	Orange/Gray

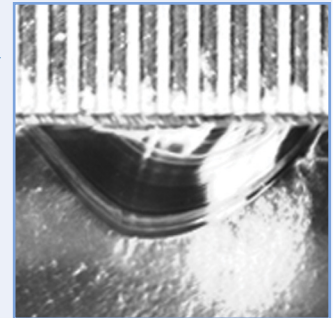
BD Quikheel™¹

The BD Quikheel cut profile illustrates an incision with an initial blunt puncture followed by a slicing action.



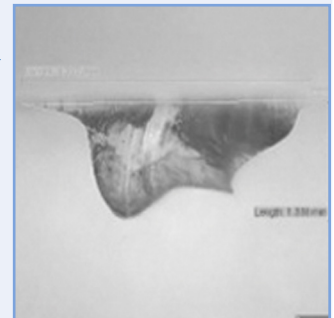
Cardinal Health gentleheel™²

The Cardinal Health gentleheel profile illustrates an incision with an angular initial puncture, followed by an increasingly deep arc.



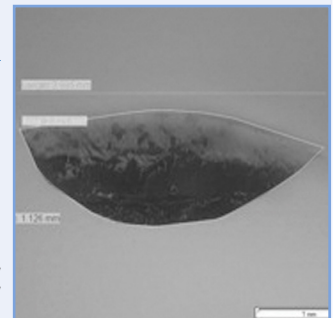
ITC Tenderfoot®³

The ITC Tenderfoot cut profile illustrates an incision with a plunging, multi-angled puncture and a jagged, lopsided “W” pattern.



babyLance™ Safety Heelstick

The babyLance cut profile illustrates a gently arcing incision that lacks a blunt puncture mark or inconsistent, jagged cut.



¹ Trademark of International Technidyne Company
² Trademark of Becton, Dickinson and Company
³ Trademark of Cardinal Health, Inc.

Americas
3883 Rogers Bridge Road NW
Suite 501
Duluth, GA 30097
Tel: +1 770 448 9493

Asia
15 Hoe Chiang Road #12-02
Tower Fifteen
Singapore 089316
Tel: +65 63451588

Europe
Tel: +44 330 122 2630